

COURSE ENROLLMENT PROPORTIONALITY REPORT REFERENCE GUIDE

Purpose

The Course Enrollment Proportionality Report is designed to enable district staff to examine course enrollment by student sub-groups in comparison to their representation in the overall student population.

Users can create a Course Enrollment Proportionality Report for one or more course codes and can download the detail data for validation.

Preparation

Prior to running this report, **Course Codes** and **Course Descriptions** are needed. These may be obtained from Homeroom Admin Menu Path:

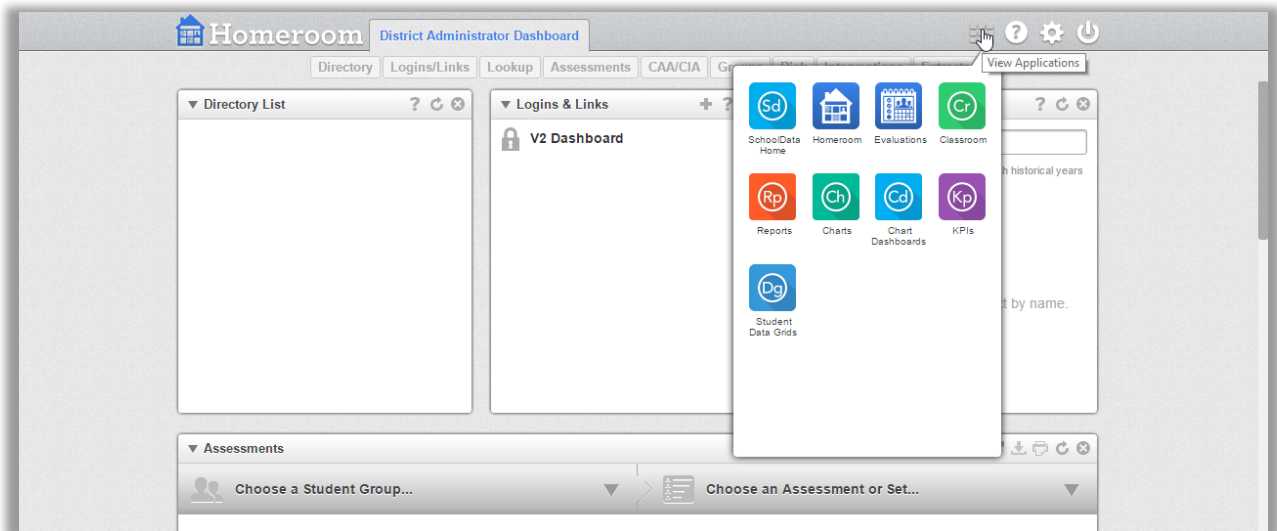
Reports Admin>>Courses.

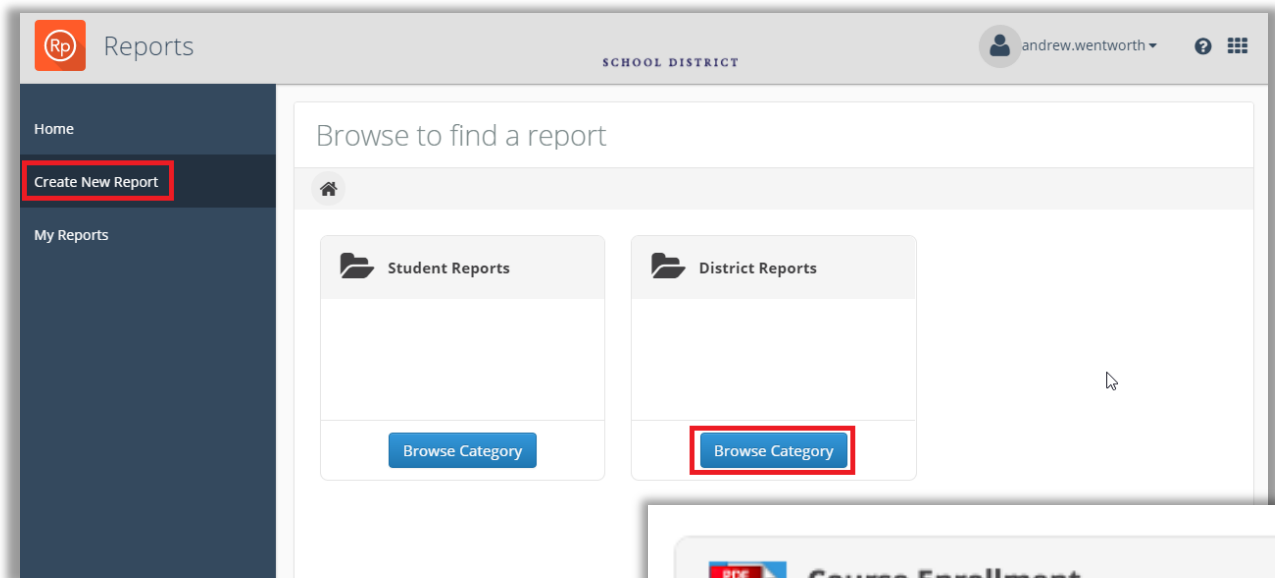
Course Code	Course Description	Course Code	Course Description
Fine and Performing Arts	ART054	Elem of Art 5-8 - ART054 (11/40000)	Elem of Art 5-8, Visual Arts - Middle/Jr High Curriculum
Fine and Performing Arts	ART054	ELEMOfART 5-8 - ART054 (SCED:05/40000)	ELEMOfART 5-8 - Middle/Jr High Curriculum
Fine and Performing Arts	ART061	WATERCOLORS 7-8 - ART061 (11/40000)	WATERCOLORS 7-8, Visual Arts - Middle/Jr High Curriculum
Fine and Performing Arts	ART062	WATERCOLORS 7-8 - ART062 (11/40000)	WATERCOLORS 7-8, Visual Arts - Middle/Jr High Curriculum
Elementary Curriculum	ART071	DRAWING 1-3 - ART071 (1/80000)	DRAWING 1-3, Elementary Curriculum - Elementary Curriculum
Elementary Curriculum	ART072	DRAWING 1-3 - ART072 (1/80000)	DRAWING 1-3, Elementary Curriculum - Elementary Curriculum

(Sample Screenshot)

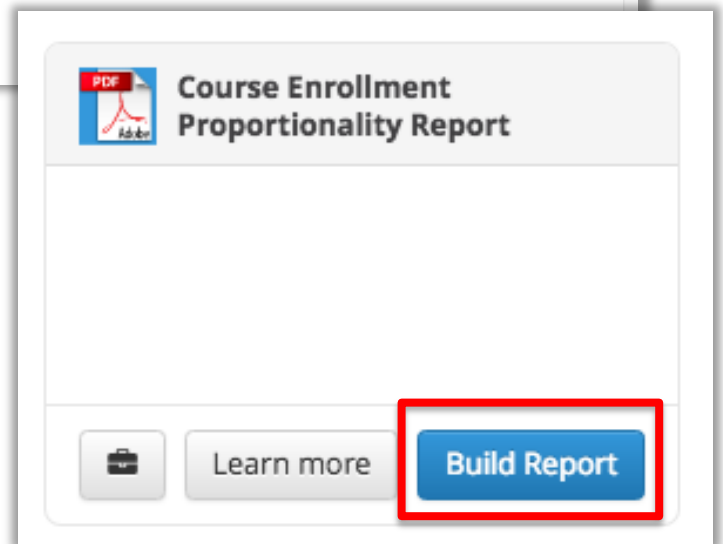
Running the report

From Homeroom, click on the grid in the top right corner of the screen and click the Reports Application icon.





- Click Create New Report.
- Click Browse Category in the District Reports Folder.
- Click Build Report under Course Enrollment Proportionality Report.



Course Enrollment Proportionality Report

Description:

Download Using Most Up-To-Date Data

School Year

(1) 2015/16

Course Code List

sci332,sci333

Course List Descriptor

Forensic Science

School

(1) SDS High School

Grade

(4) 12th Grade 11th Grade 10th Grade 9th Grade

Genders

(2) Male Female

Federal Race Codes

(7) Asian Black/African American Hispanic America

Programs

(3) Free/Reduced Lunch Special Education Bilingual Education

Generate Report Download Validation Workbook

Required Parameters

School Year: Select a school year.

Course Code List: Type in one or more course codes. Separate codes with a comma (e.g. sci332,sci333).

Course List Descriptor: Type in a course code description or a description that appropriately names the courses included in the Course Code List from above (e.g. Forensic Science).

School: Select one or more schools.

Grade: Select the grade level(s) you would like displayed or leave blank for all.

Examined Sub-Populations (optional parameters)

Genders: Select the gender(s) you would like displayed or none.

Federal Race Codes: Select the Federal Race Code(s) you would like displayed or none.


Programs: Select the Program(s) you would like displayed or none.

- Click Generate Report to begin generating the report.
- Click Download Validation Workbook to view the data used to generate the report (optional).

Course Enrollment Proportionality Report Save & Name ×

Your report has successfully been generated and is ready to be downloaded.

[Download Validation Workbook](#)

A large graphic of a document with a red tab at the top left containing the word "PDF" in white. Below the tab, the word "Download" is written in large black font. Underneath "Download" is a black icon of a document with a downward-pointing arrow. At the bottom of the graphic is the Adobe logo in grey.

- Click on the PDF Download Adobe icon to view the report.
- Click Download Validation Workbook to view the data used to generate the report (this is the same function as above).
- Click Save & Name if you wish to save this report for future use and/or regenerate the report with these parameters.

Summary of all Examined Sub-Populations

Proportionality Report

Overall Population

Year:	2015/16
School(s):	Happy Valley High School, Peaceful Valley High School
Grade(s):	10th, 11th, and 12th Grade
8563 Students	

Examined Sub Population

Students:	Enrolled in Computer Science Courses
135 Students	

Student Sub Groups

GENDER	Students	Proportions		Composition Index		
Female Students		49.99%	23.45%	0.46		Significant
Male Students		50.01%	76.55%	1.53		Significant

ETHNICITY / RACE	Students	Proportions		Composition Index		
Asian		11.45%	23.65%	2.07		Severe
Black/African American		12.35%	04.88%	0.40		Severe
Hispanic		10.65%	04.75%	0.45		Significant
American Indian/Native Alaskan		07.34%	07.23%	0.99		Mild
Two or more races		07.75%	06.57%	0.85		Significant
Native Hawaiian/Pacific Islander		07.66%	5.59%	0.73		Significant
White/Caucasian		34.55%	38.85%	1.12		Significant
Some other race		08.25%	08.48%	1.03		Mild

PROGRAM	Students	Proportions		Composition Index		
Students on 504		4.04%	1.05%	0.25		Severe
Students on Bilingual Education		33.25%	32.50%	0.98		Mild
Students on Free Reduced Lunch		66.65%	70.75%	1.06		Mild

Composition Index Key: ■ Severe = 0.0 - 0.40 and 2.01 - higher ■ Mild = 0.90 - 0.99 and 1.01 - 1.10
■ Significant = 0.41 - 0.89 and 1.11 - 2.0 ■ Zero = 1.0

The Composition Index at a glance (configurable by the district):

Numbers greater than one indicate the group makes up more of the examined sub-group than their representation in the overall population. Numbers less than one indicate the group makes up less of the examined sub-group than their representation in the overall population. When the percentages are equal, the composition index equals 1. This is considered an equitable rate.